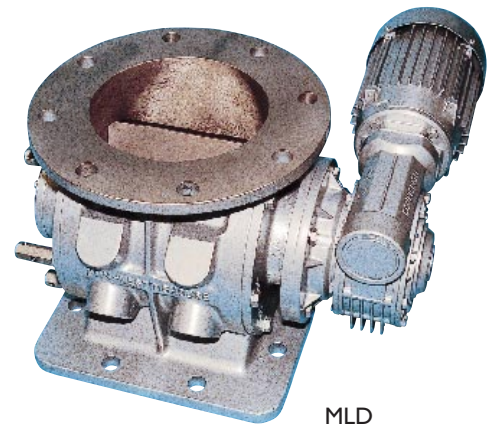


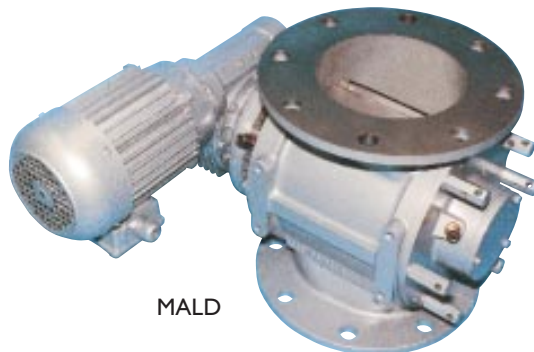
DMN-WESTINGHOUSE

MALD-MLD-MGLD

- Easy detachable non-drive side end cover and rotor assembly
- Compact design
- Substantial construction
- Pressure surge proof up to 10 bar g
- Large range of options available
- Sheared angle inlet
- Air purge shaft seals optional
- Flange drillings available to DIN ND 10, ANSI 150 lbs and JIS standards
- Direct Bonfiglioli or SEW drive (optional chain drive)
- Ideal for inverter control



MLD



MALD



MGLD

MALD, MLD and MGLD air locks

The MALD, MLD and MGLD valves have been developed for applications where valves with outboard bearings would be over specified. The valves give exceptional value for money due to the simplified construction and direct drive. The basic construction of the three valves is the same, with the exception of the bodies.

The valves are suited for both conveying and metering purposes. They are ideal for vacuum conveying applications, Big bag unloading, cyclone applications and general purpose applications.

	MLD	MALD	MGLD
Sizes	7	7	5
Capacity range*	0.8-58	0.8-58	5-79

*litre per revolution at 100 % filling

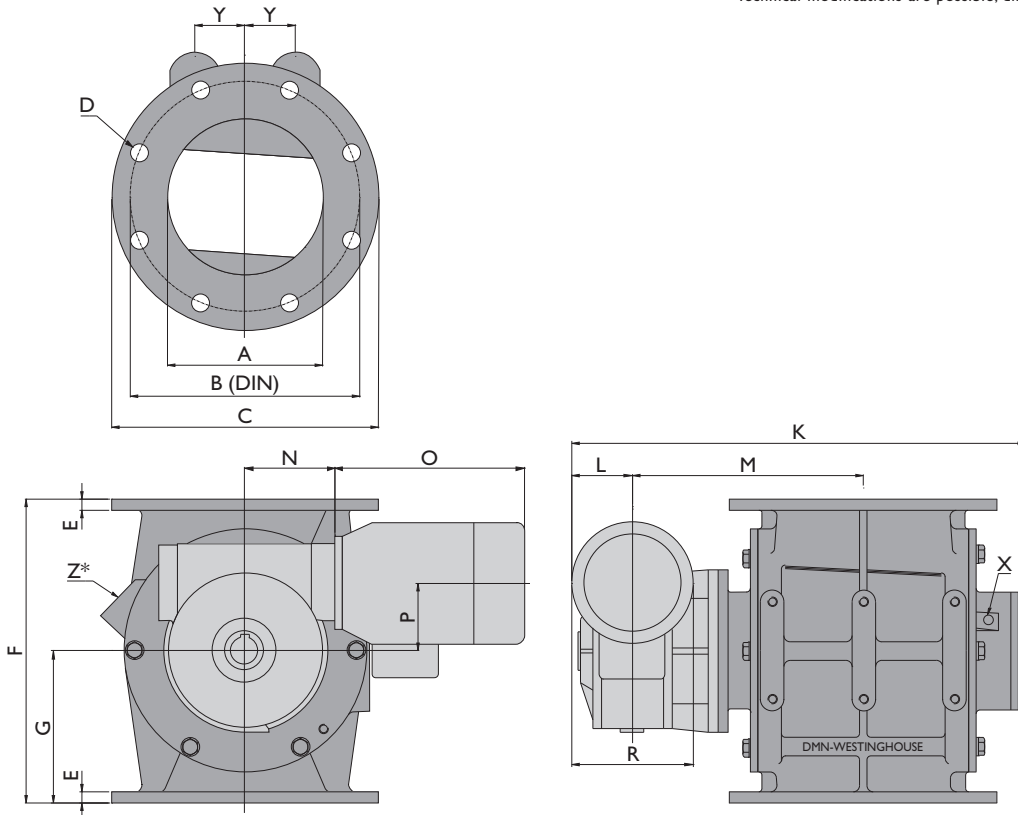
Product information

The valves are available in three materials of construction: cast iron, aluminium and stainless steel. The cast iron valves are also available nickel or chrome plated or tungsten coated.

The standard rotor has 8 fixed blades. Various rotor configurations are optionally available, such as adjustable blades, reduced capacity, scalloped, staggered, etc.

The end covers have inboard ball bearings. The shaft sealing is by means of lipseals, with the option of air purge.

The standard models are suitable for handling products up to a temperature of 70 °C, optional to 140 °C, and a maximum pressure differential of 1.5 bar. The valves are pressure shock resistant up to 10 bar g pressure.



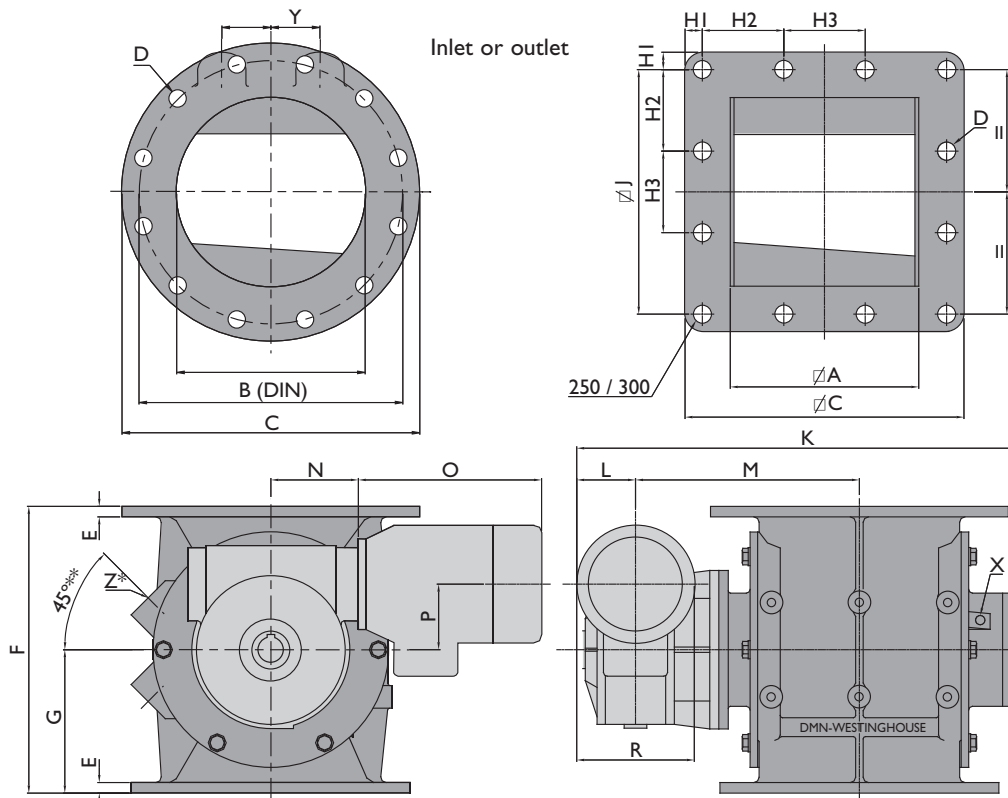
Type MALD	Ltr/rev	ØA	ØB	ØC	D	E	F	G	K	L	M	N	O	P	R	X	Y	Z*
100	0,8	100	170	210	4xØ18	10,5	180	90	364	70	176	60	229	49	140	1/8"	-	-
150	2,5	150	240	285	8xØ23	12	280	140	457	70	226	84	230	62	140	1/4"	40	3/4"
175	5,5	175	270	315	8xØ23	14	330	165	506	80	245	106	243	72	160	1/4"	53	1"
200	10,5	200	295	343	8xØ23	14	390	195	586	80	297	116	243	87	160	1/4"	65	1 1/4"
250	19	250	350	406	12xØ23	16	450	225	646	90	322	116	262	87	180	1/4"	75	1 1/4"
300	34	300	400	483	12xØ23	21	540	270	758	95	388	143	272	110	190	3/8"	95	1 1/2"
350	58	350	460	530	16xØ23	26	660	330	826	95	423	143	272	110	190	3/8"	112	1 1/2"

Type MALD	Type Bonfiglioli	≥ Nm
100	VF49	70
150	VF63	145
175	VF72	145
200	VF86	215
250	VF86	290
300	VFI10	360
350	VFI10	510

* Standard pre-drilled for cast iron

MALD

The MALD valve utilises the AL-valve body which has two round flanges and is suitable for powders. This valve is suitable for many applications where a valve with outboard bearings would be over specified.



* 0° for size 100

Type MLD	Ltr/rev	∅A	∅A	∅B	∅C	∅C	D	E	F	G	H1	H2	H3	∅J	K	L	M	N	O	P
100	0,8	100	100	170	210	175	4x∅18	10,5	170	85	20	135	-	135	364	70	176	60	229	49
150	2,5	150	150	240	285	267	8x∅23	11	275	138	88	92	-	222	457	70	226	84	230	62
200	5,5	200	200	295	340	320	8x∅23	14	325	163	104	113	-	273	506	80	245	106	243	72
250	10,5	250	250	350	395	370	12x∅23	14	380	190	23	108	108	324	586	80	297	116	243	87
300	19	300	300	400	483	445	12x∅23	21	450	225	31	128	128	384	646	90	322	116	262	87
350	34	350	350	460	530	530	16x∅23	21	540	270	109	104	104	460	758	95	388	143	272	110
400	58	400	400	515	595	595	16x∅23	26	660	330	125	115	115	515	826	95	423	143	272	110

Type MLD	R	X	Y	Z*	Type Bonfiglioli	≥ Nm
100	140	1/8	-	1/2"	VF49	70
150	140	1/4	40	3/4"	VF63	145
200	160	1/4	53	1"	VF72	145
250	160	1/4	65	1 1/4"	VF86	215
300	180	1/4	75	1 1/4"	VF86	290
350	190	3/8	95	1 1/2"	VF110	360
400	190	3/8	112	1 1/2"	VF110	510

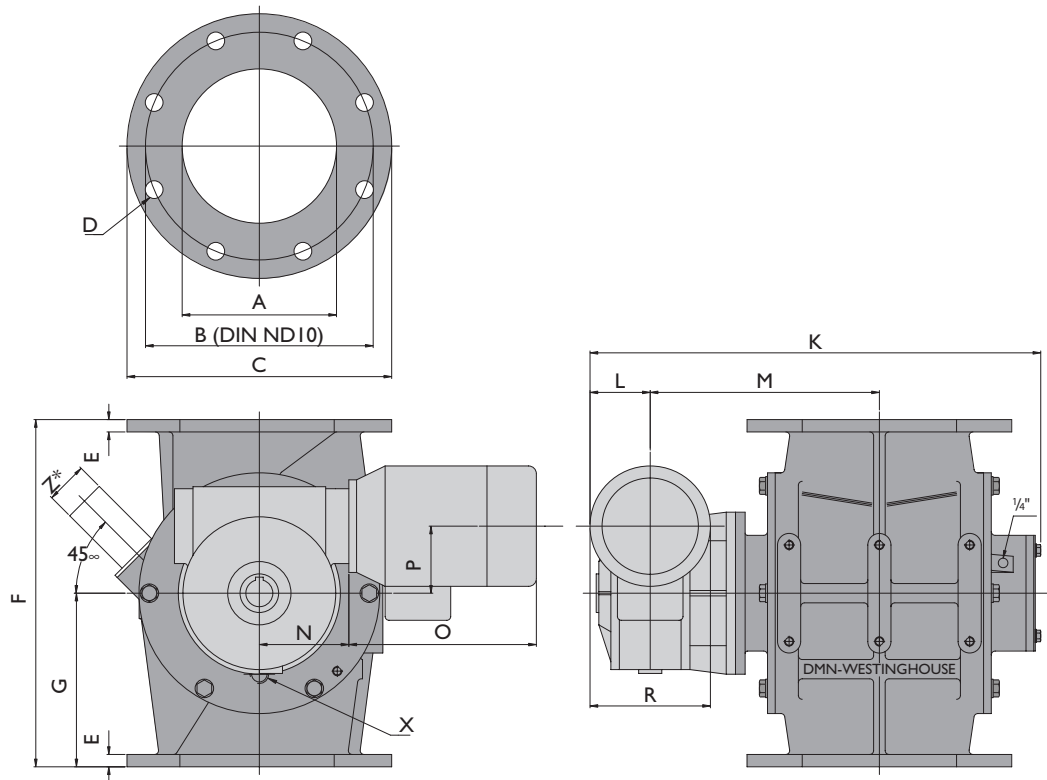
*Vent openings standard not pre-drilled

MLD

The MLD valve is based on the ML-valve body and is suitable for handling powders. The valve has one round flange and one square flange, both of which are one size larger than the MALD for the same rotor capacity. By this the valve has a large inlet in relation to the rotor volume, so that high filling efficiencies are reached with free flowing products. The valve can also be used as a transition piece from round to square or vice versa.

MGLD

Technical modifications are possible, dimensions in mm MGLD.M.01.14.D



DMN-WESTINGHOUSE have been designing and manufacturing rotary valves, diverter valves and other related components for the bulk solids handling industry for more than 30 years. Offering tailor made solutions for chemical, food, plastics and pharmaceutical industries, DMN-WESTINGHOUSE products are distributed world-wide.

Besides an extensive range of standard components, we supply USDA approved sanitary versions and explosion-proof models.

An extensive network of subsidiaries, distributors and representatives ensures a high level of service and support all over the world.

© DMN - HOLLAND - 2001

Type MGLD	Ltr/rev	ØA	ØB	ØC	D	E	F	G	K	L	M	N	O	P	R	X	Z*
150	5	150	240	285	8xØ23	12	360	180	506	80	245	106	243	72	160	3/8"	Ø48,3x2
200	10	200	295	343	8xØ23	16	450	225	586	80	297	116	243	87	160	1/2"	Ø48,3x2
250	17,5	250	350	406	12xØ23	18	500	250	646	90	322	116	262	87	180	1/2"	Ø48,3x2
300	32	300	400	483	12xØ23	23	600	300	758	95	388	143	272	110	190	3/4"	Ø48,3x2

Type MGLD	Type Bonfiglioli	≥ Nm
150	VF72	145
200	VF86	215
250	VF86	290
300	VF110	360

* Vent hole

MGLD

The MGLD valve is based on the GL-valve body and is suitable for granular products, definitely not for powders. The valve has a large air vent opening. Degradation of the conveyed product has been minimised by the configuration of the body and rotor, whilst optimal pocket filling efficiency is still attained. The full end disc rotor is made of 316 stainless steel.

Global Technology & Engineering
PO Box 687
Excelsior Springs, MO 64024
Toll Free (866) 630-3500

www.globaltecheng.com



DMN
WESTINGHOUSE